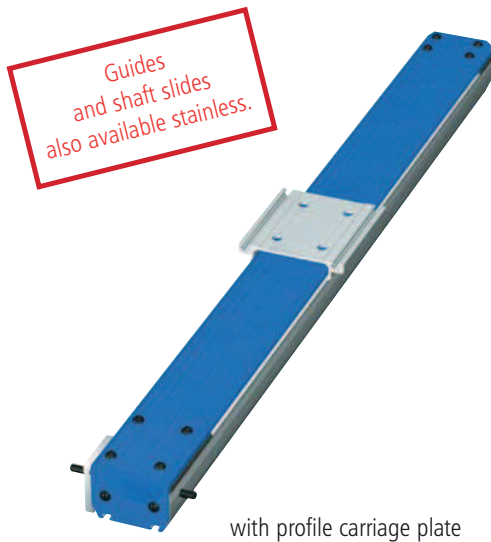


Linear units with toothed belt drive

LEZ 1G Blue Line



Features

- Aluminium profile with midjet linear guide LFS-8-1
- Clearance-free feed with timing belt feed axis - timing belt with 3 mm pitch, width 15 mm
- Feed 2.4 m/s, at the most
- Shaft slide WS 1 L 126 x W 72 mm
- Repetitive accuracy less or equal ± 0.2 mm
- Limit and/or reference switch accuracy < 0.1 mm
- Available in lengths up to 2.05 m
- Motor can be mounted on both sides due to an extended shaft end on the driving side
- Numerous combination possibilities due to additional special and angle profiles
- Integrated reference switch

Ordering key

2 3 2 1 X X X X X X

Motor

- 0 = without motor
- 3 = with step motor MS 200-HT
- 4 = with DC-Servo motor DC 100
- 5 = with EC-Servo motor EC 60-S

Driving Side

- 0 = motor connection, right*
 - 1 = motor connection, left*
- * motor flange for drive is mounted on the right resp. left side

Slide / Connection

- 0 = with standard slide profile
- 1 = with connecting slides for compound tables
- 2 = with angle slide, right
- 3 = with angle slide, left

Basic Profile Length (mm)

- 450, 550, 650, 750, 850, 950, 1050, 1150, 1250, 1350, 1450, 1550, 1650, 1750, 1850, 1950, 2050
- (e.g. 450 mm = 045, 2050 mm = 205)

Travel = L -307 mm

Technical specification

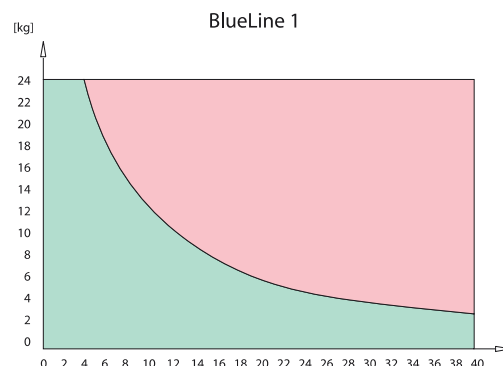
- Belt version.....HTD 3M, width 15 mm
- Mass of slide0.730 kg
- Weight without drive module1,000 mm $\hat{=}$ 6.25 kg
- Nominal mass of timing belt0.0375 kg/m
- Nominal weight of feed axis0.440 kg/100 mm
- Effective diameter of the synchronized pulleys..... \varnothing 15.28 mm
- Moment of inertia of the synchronized pulleys $1.461 \cdot 10^{-6}$ kgm²
- Feed per revolution.....48 mm

Basic profile + LFS-8-1

- Moment of inertia I_x 68.73 cm⁴
- Moment of inertia I_y 15.92 cm⁴
- Moment of resistance W_x 17.18 cm³
- Moment of resistance W_y 5.49 cm³

Load Diagramm

Zulässig beschleunigte Massen auf die Riemenfestigkeit bezogen *



* with vertical construction, the acceleration due to gravity ($g = 9.81$ m/s²) must be taken into account

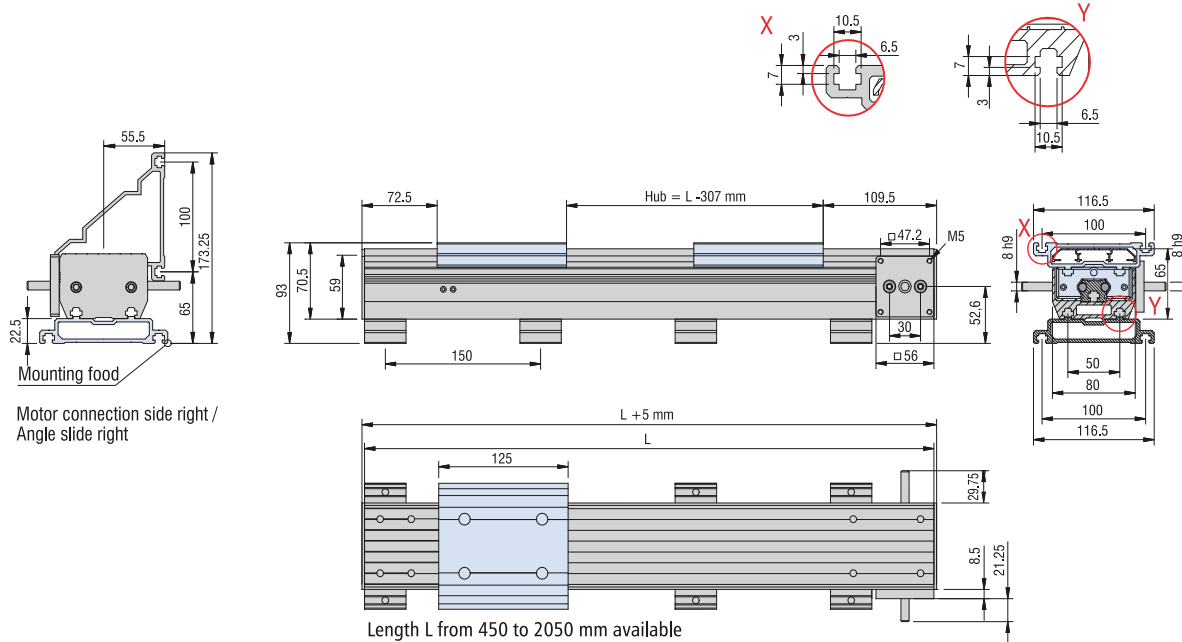
Linear units

with toothed belt drive

LEZ 1G Blue Line

Dimensioned drawings

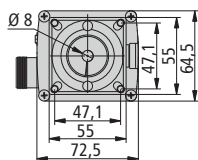
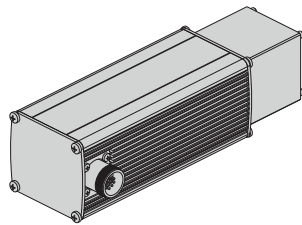
without motor, with profile carriage plate and angle slide



Motor modules (Motor pin assignments are on page B-74)

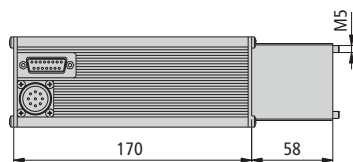
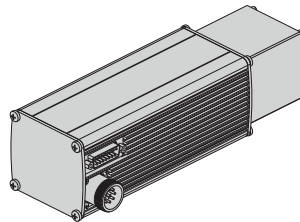
Drive module with stepper motor
MS 200-HT

Part-no.: **396058 4060**



Drive module with servo motor
DC 100

Part-no.: **396112 3060**



Drive module with servo motor
EC 60-S

Part-no.: **396415 3061**

