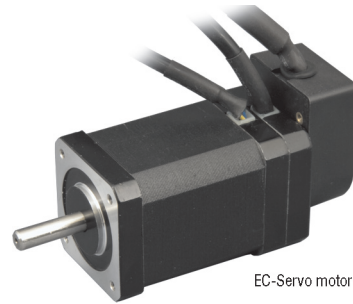


## Characteristics

- electronically commutated 3-phase servo motor
- brushless drive
- compact design
- incremental measuring system
- Hall sensors
- Applications: positioning, speed control
- connection via circular / Dsub switch
- brake: 24VCD
- encoder: 1000 Inc/rotation, RS422, power +5VCD

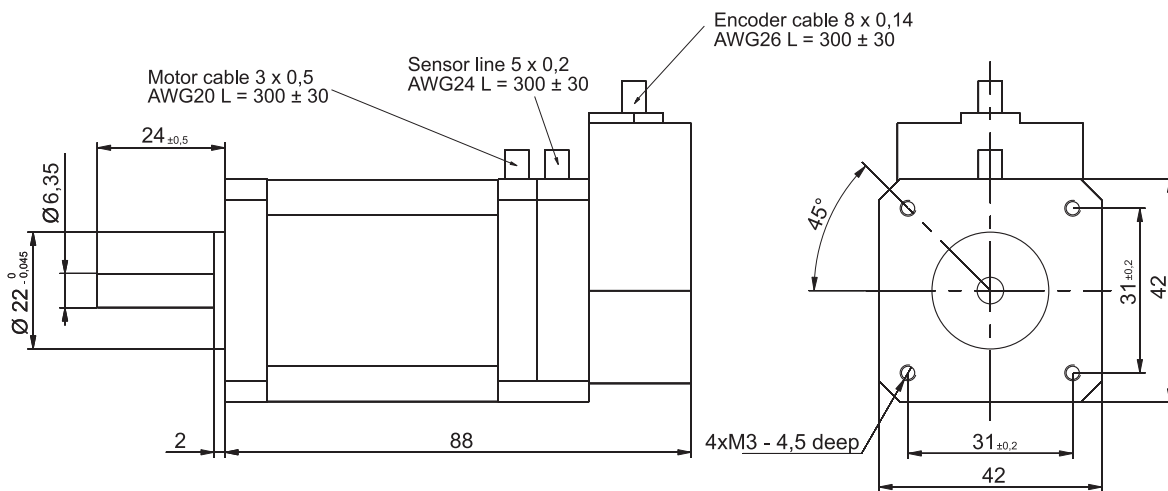


EC-Servo motor EC 42

## Technical Data

Item-no.	Nominal power [W]	Nominal voltage [V DC]	Power [A]	No. of poles	Nominal speed [U/min.]	Torque at rated [Nm]	Max. Torque [Nm]	Length L [mm]	Weight [kg]
474062 0048	62	48	1,75	8	3000	0,2	0,6	88	0,55

## Scale Drawing



## Connections

### Motor cable

Signal	Colour
Motor U	yellow
Motor V	blue
Motor W	green

### Hall cable

Signal	Colour
Hall A	yellow
Hall B	green
Hall C	blue
Vcc + 5V	red
Gnd	black

### Encoder cable

Signal	Colour
Encoder A	blue
Encoder /A	blue / black
Encoder B	green
Encoder /B	green / black
Encoder Z	yellow
Encoder /Z	yellow / black
Vcc +5V	red
Gnd	black

Technical specifications subject to change.